

## ECDC SITUATION REPORT

### Pandemic influenza (H1N1) 2009

Update 29 July 2009,  
17:00 hours CEST

## Main developments in past 24 hours

- 1529 new cases, including 1096 new cases from Germany, were confirmed and reported from the EU and EFTA countries, reaching a total of 22,817;
- 5,361 new cases including 67 fatal cases, were reported from non-EU and EFTA countries, reaching a cumulative total of 152,968 cases;
- Media discussed a unpublished US study on complications among pregnant influenza A(H1N1)v cases;
- Influenza A(H1N1)v strain found in a pig herd in Canada, no human cases associated.

This report is based on official information provided by the national public health websites, or through other official communication channels. An update on the number of confirmed cases as of 29 July 2009, 17:00 hours CEST, is presented in Table 1 and Table 2.

**Disclaimer:** *The number of confirmed cases reported is based on laboratory test results, except for the US. Depending on the national laboratory testing policies, the actual number of cases by country may therefore be higher. Several countries have now announced recommendations on treatment on clinical signs only and focused laboratory testing only for specific population groups or in outbreaks. For these countries, the reported numbers of cases presented in this report will severely underestimate the true incidence in the country and will not be comparable to countries still recommending laboratory tests of all suspected influenza cases.*

## Epidemiologic update

Out of the 31 EU and EFTA countries, 30 countries have reported a total of 22,817 confirmed cases of influenza A(H1N1)v infection, including 37 deaths. In the past 24 hours, 1,529 new cases and no new fatal cases were reported from the EU and EFTA countries. Germany reported 1,096 new cases.

Outside of the EU and EFTA countries, a total of 5,361 new cases have been reported within the last 24 hours. Swaziland reported their first cases. 67 new fatal cases were reported from Australia (3), Costa Rica (4), Dominican republic (1), El Salvador (2), Panama (1), Canada (3), Mexico (1), Bolivia (1), Colombia (4), Ecuador (3), Peru (1), Venezuela (1), Malaysia (1) and Thailand (41). In total, 152,968 cases including 1079 fatal cases have been reported from non-EU and EFTA countries.

Globally, the total number of confirmed and reported influenza A(H1N1)v cases to date is 175,785, including 1,116 deaths.

## Public health developments

### Planning Assumptions for the First Wave of Pandemic A(H1N1) 2009 in Europe

The 2009 pandemic is less severe than might have been expected and ECDC has been made aware by two European Union countries (Norway and the UK) of updating they have made of their planning assumptions specifically for a first wave of an A(H1N1) 2009 pandemic. The UK planning assumptions are based on a reasonable worst case scenario that is it is not the average development in a certain country. The model uses parameter estimates from the UK and abroad on the 2009 strain and fitted using real data on UK cases over the period when the majority of cases were confirmed and reported daily.

Major drivers for the pandemic at present in Europe include the value of the basic reproduction number  $R_0$ , from which the final attack rate can be estimated. Seemingly also the effect of seasonality (influenza always spreads less efficiently in the spring and summer in temperate zones, the reasons for this remain unclear) plays a role here. For European planning assumptions and with possible changes of the virus a broader span of  $R_0$  outside the 1.4 – 1.5 range *could* be considered as a highest estimate population value of 1.8 has been reported. Early estimates for  $R_0$  from New Zealand and Australia have been up to 2.0 and 2.3, but are likely to decrease as the pandemic progresses, as the calculations are based on very limited data. More recent estimates indicates a value of 1.2 – 1.5 in Australia. Consensus among mathematical modellers working with (H1N1) 2009 is that  $R_0$  of 1.5 is the reasonable highest estimate at the moment. In terms of total attack rate,  $R_0$  of 1.5 corresponds to about 60% becoming infected (also including the asymptomatic cases).

European pandemic planning assumptions were considered at a ECDC meeting of pandemic planners in January this year. They concluded it would not be desirable or possible to reach consensus on a single set of European planning assumptions. The planning assumptions for the major first wave are of broader European value and interest and other countries could usefully compare them to what they are using. However in general when it comes to pandemic planning assumptions, the variability between even EU countries needs to be taken into account

The full document is available at:

[http://www.ecdc.europa.eu/en/Health\\_topics/novel\\_influenza\\_virus/2009\\_Outbreak/](http://www.ecdc.europa.eu/en/Health_topics/novel_influenza_virus/2009_Outbreak/)

## Other developments

Media reported on a study on pandemic influenza related complications among pregnant women. The study shows that pregnant women infected with pandemic influenza (H1N1) are at higher risk of hospital admission than other women of childbearing age or the general population. This work, based on the first pregnant cases from USA, will be published in the journal Lancet next week.

The full article can be found at:

[http://www.thelancet.com/journals/lancet/article/PIIS0140-6736\(09\)61304-0/fulltext](http://www.thelancet.com/journals/lancet/article/PIIS0140-6736(09)61304-0/fulltext)

The Canadian Quebec provincial agriculture, food and fisheries ministry (MAPAQ) released a statement yesterday saying that the pandemic influenza (H1N1) strain was found in samples from a pig herd in Quebec. No human cases have been identified in association with this situation, but it is assumed that the original source of infection was an infected human case. The herd has recovered and Canadian authorities assure that consumption of pork is still safe and no human health hazards are associated.

Media reports indicate that Russia's chief public health officer has recommended the cancellation of school trips abroad this summer as a precaution against swine flu.

Spain announced changes in surveillance for Pandemic influenza (H1N1) 2009. Laboratory confirmation is now required only for certain suspect cases and surveillance will be done through a sentinel network covering 2 percent of the population.

**Table 1: Reported new confirmed cases and cumulative number of influenza A(H1N1)v as of 29 July 2009, 16:00 hours (CEST) in the EU and EFTA countries**

Country	Confirmed cases reported in the last 24h	Cumulative number of confirmed cases	Deaths among confirmed cases*
Austria	34	131	-
Belgium	-	126	-
Bulgaria	2	35	-
Cyprus	-	297	-
Czech Republic	3	66	-
Denmark	7	213	-
Estonia	3	39	-
Finland	-	176	-
France**	-	628	-
Germany	1096	4445	-
Greece	-	520	-
Hungary	7	77	1
Iceland	12	46	-
Ireland	50	276	-
Italy	-	618	-
Latvia	2	18	-
Lithuania	5	15	-
Luxemburg	14	52	-
Malta	-	123	-
Netherlands***	91	364	-
Norway	104	399	-
Poland	-	71	-
Portugal	-	248	-
Romania	9	125	-
Slovakia	3	47	-
Slovenia	7	115	-
Spain	-	1538	6
Sweden	63	453	-
Switzerland	17	397	-
United Kingdom	-	11159	30
<b>Total</b>	<b>1529</b>	<b>22817</b>	<b>37</b>

Note: cases reported in the EU and EFTA countries correspond to the EWRS notifications by Member States or Ministry of Health websites. *Countries shaded with gray are not recommending laboratory tests for all suspect cases, therefore comparisons in time or between these countries should not be made at present.*

\*Deaths are included in the cumulative number of confirmed cases

\*\* Cases reported from France include those reported from Reunion-Mayotte (10), Antilles-Guyana (9), French Polynesia (5) and French New Caledonia (46).

\*\*\* Cases from the Netherlands include those reported from Aruba and the Dutch Antilles

**Table 2: Reported cumulative number of confirmed cases and deaths of influenza A(H1N1)v as of 29 July 2009, 16:00 hours (CEST) outside of the EU and EFTA area**

<b>Country</b>	<b>Confirmed cases reported in the last 24h</b>	<b>Cumulative number of confirmed cases</b>	<b>Deaths among confirmed cases*</b>
<b>OTHER EUROPEAN COUNTRIES and CENTRAL ASIA</b>			
Albania	-	3	-
Andorra	-	1	-
Bosnia and Herzegovina	-	2	-
Channel Islands	-	16	-
Croatia	2	50	-
Georgia	-	1	-
Former Yugoslav Republic of Macedonia	-	14	-
Isle of Man	-	11	-
Kazakhstan	7	13	-
Kosovo	-	1	-
Monaco	-	1	-
Montenegro	-	18	-
Russia	-	28	-
Serbia	-	115	-
Ukraine	-	1	-
<b>MEDITERRANEAN AND MIDDLE-EAST</b>			
Algeria	-	14	-
Bahrain	-	77	-
Egypt	9	226	1
Iran	8	50	-
Iraq	-	36	-
Israel	-	1520	1
Jordan	3	75	-
Kuwait	21	112	-
Lebanon	38	128	-
Libya	-	9	-
Morocco	1	47	-
Occupied Palestinian Territory	-	104	-
Oman	-	19	-
Qatar	-	42	-
Saudi Arabia	-	294	1
Syria	-	5	-
Tunisia	-	10	-
Turkey	-	116	-
United Arab Emirates	-	110	-

Yemen	-	10	-
<b>AFRICA</b>			
Botswana	-	4	-
Cape Verde	-	6	-
Ethiopia	-	4	-
Ivory Coast	-	2	-
Kenya	-	22	-
Mauritius	-	2	-
Namibia	-	4	-
Seychelles	1	3	-
South Africa	32	151	-
Sudan	-	2	-
Swaziland	2	2	-
Tanzania	-	1	-
Uganda	1	8	-
<b>NORTH AMERICA</b>			
Canada	-	10449	58
Mexico	292	16019	142
**USA	-	43771	302
<b>CENTRAL AMERICA AND CARIBBEAN</b>			
Antigua and Barbuda	-	3	-
Bahamas	6	29	-
Barbados	-	23	-
Belize	-	15	-
Bermuda	-	4	-
British Virgin Islands	-	2	-
Cayman Islands	-	43	1
Costa Rica	-	606	21
Cuba	-	186	-
Dominica	-	1	-
Dominican Republic	23	131	3
El Salvador	15	545	9
Grenada	-	1	-
Guatemala	-	458	9
Guyana	-	3	-
Haiti	-	3	-
Honduras	-	169	1
Jamaica	-	53	2
Nicaragua	18	432	-
Panama	-	553	2
Saint Kitts and Nevis	-	3	1

Saint Lucia	-	3	-
Saint Vincent	-	1	-
Suriname	-	14	-
Trinidad-Tobago	-	97	-
<b>SOUTH AMERICA</b>			
Argentina	-	3056	165
Bolivia	11	921	7
Brazil	-	1566	34
Chile	-	11641	79
Colombia	14	259	13
Ecuador	-	696	17
Paraguay	-	195	14
Peru	-	3292	24
Uruguay	-	550	22
Venezuela	75	426	2
<b>NORTH-EAST AND SOUTH ASIA</b>			
Afghanistan	-	15	-
Bangladesh	-	30	-
Bhutan	-	2	-
China (mainland)	151	2003	-
Hong Kong SAR China	189	3270	1
India	21	475	-
Japan	-	5022	-
Macao SAR China	2	167	-
Maldives	-	1	-
Nepal	-	17	-
South Korea	48	1327	-
Sri Lanka	9	53	-
Taiwan	-	1280	-
<b>SOUTH-EAST ASIA</b>			
Brunei Darussalam	-	334	1
Cambodia	-	17	-
Indonesia	28	444	1
Laos Peoples Democratic Republic	-	51	1
Malaysia	47	1266	4
Myanmar	2	9	-
Philippines	-	2668	3
Singapore	-	1217	5
Thailand	2103	8879	65
Vietnam	31	703	-
<b>AUSTRALIA AND PACIFIC</b>			

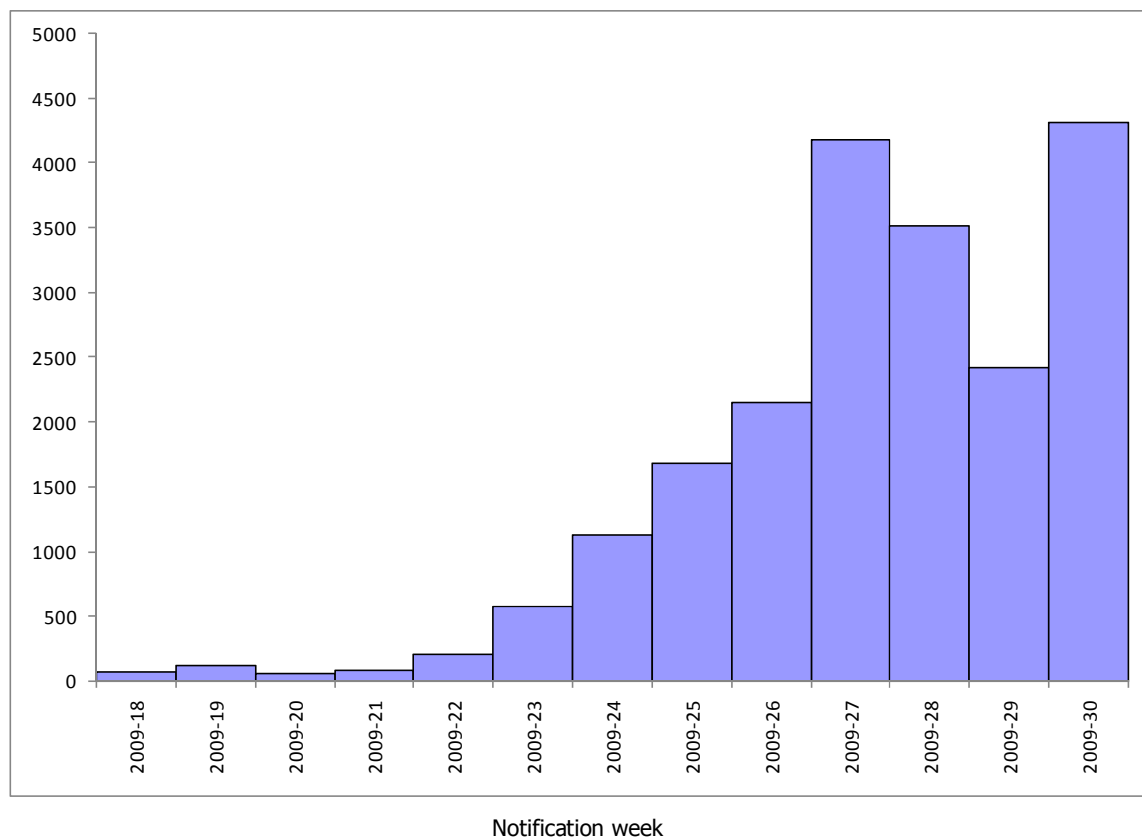
Australia	2083	21109	53
Cook Islands	-	1	-
Fiji	24	97	-
Micronesia	-	1	-
New Zealand	44	2748	13
Papua New Guinea	-	1	-
Republic of Palau	-	1	-
Samoa	-	37	-
Solomon Islands	-	2	-
Tonga	-	9	1
Vanuatu	-	3	-
<b>TOTAL</b>	<b>5361</b>	<b>152968</b>	<b>1079</b>

Note: cases reported in non-EU and EFTA countries correspond to cases published on Ministry of Health websites, or through WHO, or through credible media source quoting national authorities. Therefore, some of these cases may be taken out at a later stage if not validated.

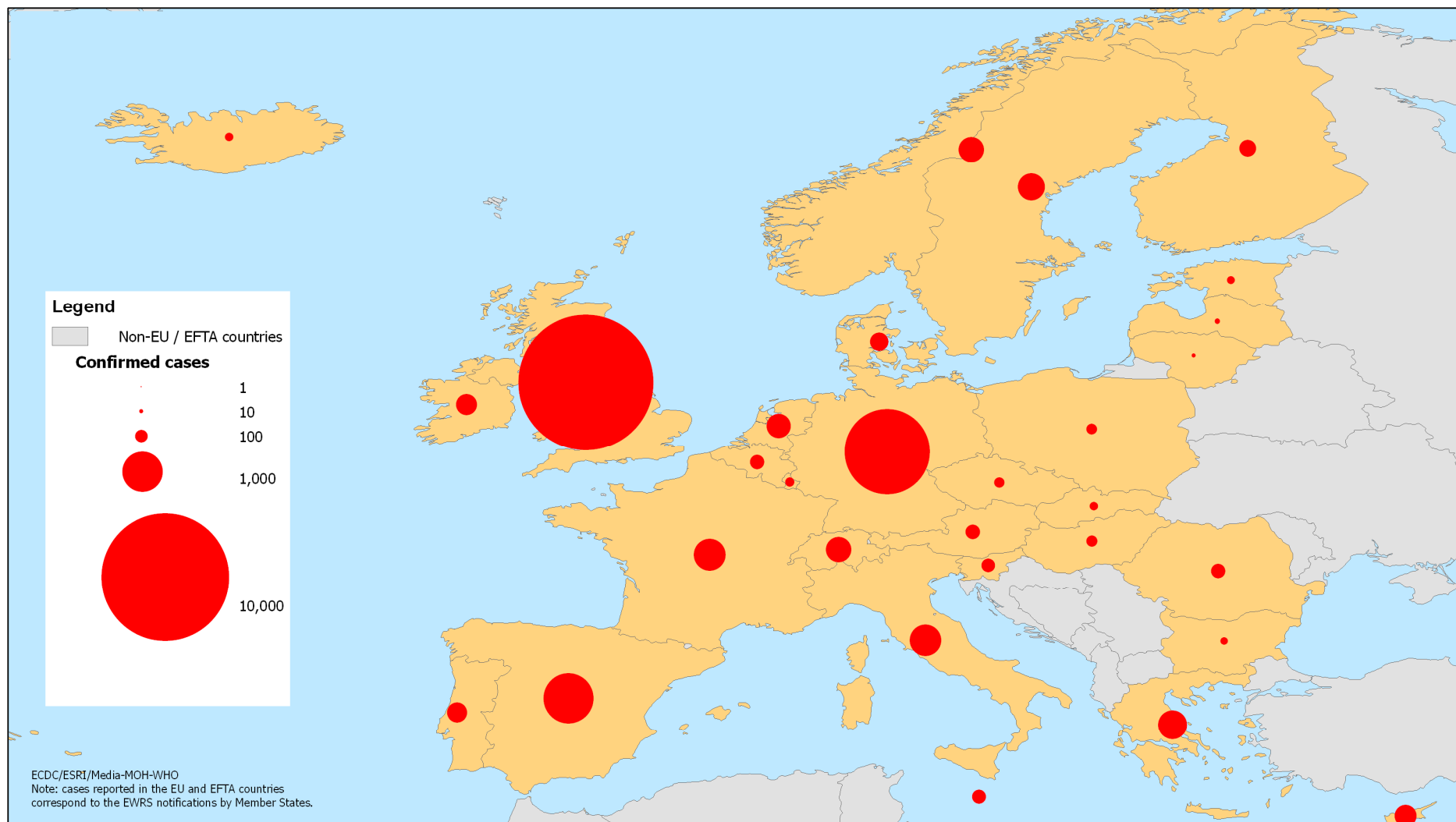
\* Deaths are included in the cumulative number of confirmed cases

\*\*Cases in the US include both probable and confirmed cases. They also include confirmed cases from Puerto Rico, American Samoa, Guam and Virgin Islands.

**Figure 1: Distribution of confirmed cases of influenza A(H1N1)v infection by week of notification, EU and EFTA countries, 29 April to 26 July 2009**



## Reported cumulative number of confirmed cases of influenza A(H1N1)v in EU and EFTA countries, as of 29 July 2009, 17:00 hours CEST



## Reported cumulative number of confirmed cases of influenza A(H1N1)v by country, as of 29 July 2009, 17:00 hours CEST

